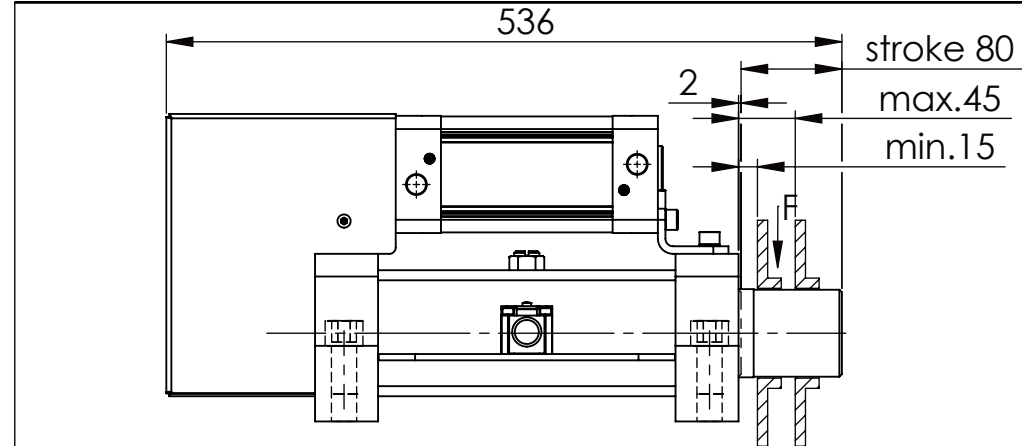
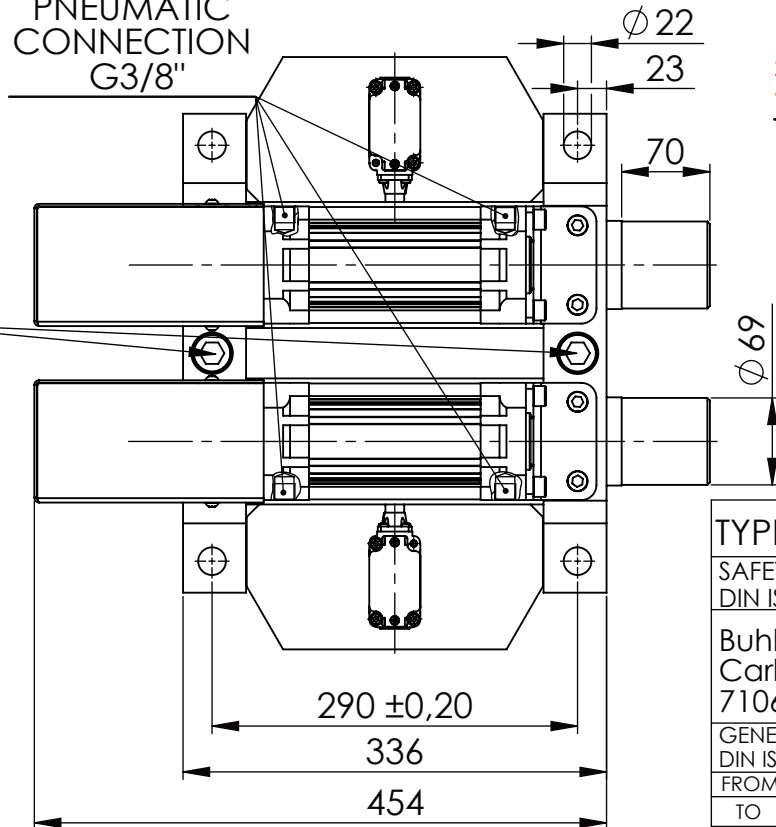


Hexagon Screw DIN 931/DIN EN ISO 4014-M20x90- 8.8, Ma=320Nm,  
Washer DIN 125/DIN EN ISO 7089 -A21, retain with Loctite or similar

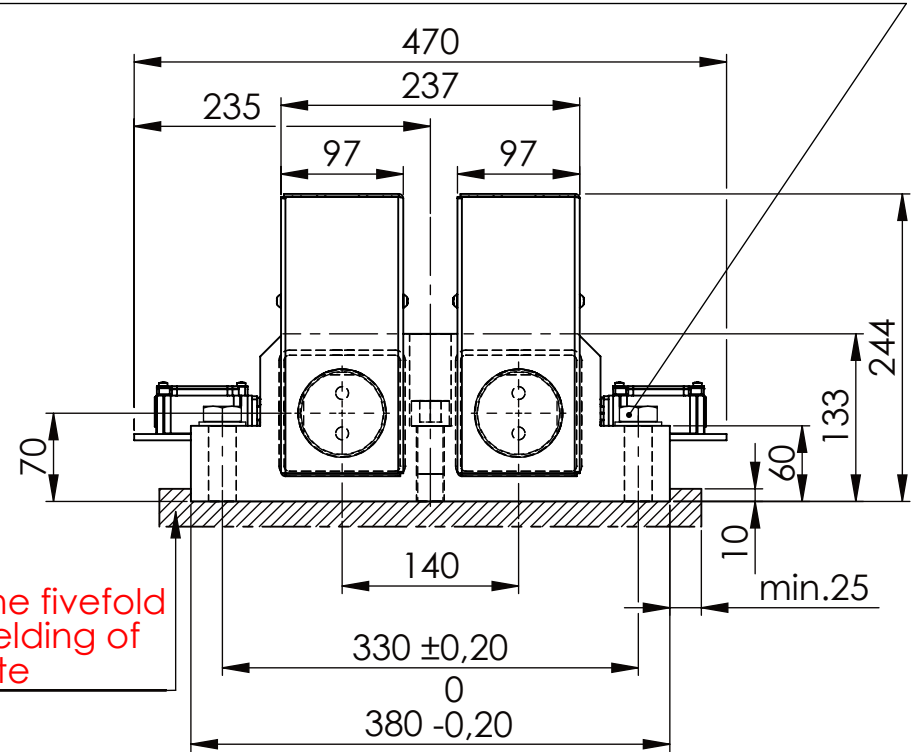
Socket Head Cap Screw DIN 912/DIN EN ISO 4762 - M20x90-8.8,  
Ma=320Nm, retain with Loctite or similar



PNEUMATIC  
CONNECTION  
G3/8"

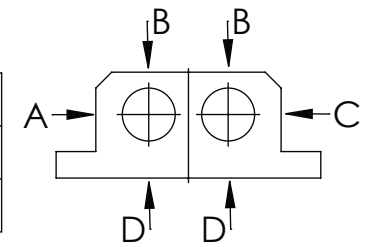


please observe the fivefold  
security during welding of  
the Retaining plate



longholedisk

A B C	D
F all. 60.000 N	17.000 N
under static load	



TYPE OF DOKUMENT: DATA SHEET

WEIGHT [KG]: 77.31

PROJECTION

SAFETY NOTE  
DIN ISO 16016:2007-12  
Buhl Maschinenbau e.K.  
Carl-Zeiss-Str. 2  
71065 Sindelfingen

	Date	Name
DRAW.	26.01.17	G.Velleuer
APP.	27.01.17	W.Buhl

DESIGNATION	SHEET-FORMAT
SAFETY LOCKING	DINA4
ADDITIONAL DESIGNATION	SCALE
SA 70PT-1S	1:6
DRAWING-NO.:	REV.
01-SA 70 PT-1S 01-05	0

GENERAL TOLERANCE DIN ISO 2768 m-K						
FROM	6	30	120	400	1000	2000
TO	6	30	120	400	1000	2000
TOL.±	0.1	0.2	0.3	0.5	0.8	1.2
	0.1	0.2	0.3	0.5	0.8	2.0

Buhl Maschinenbau e.K.  
Sindelfingen

**BUHL**