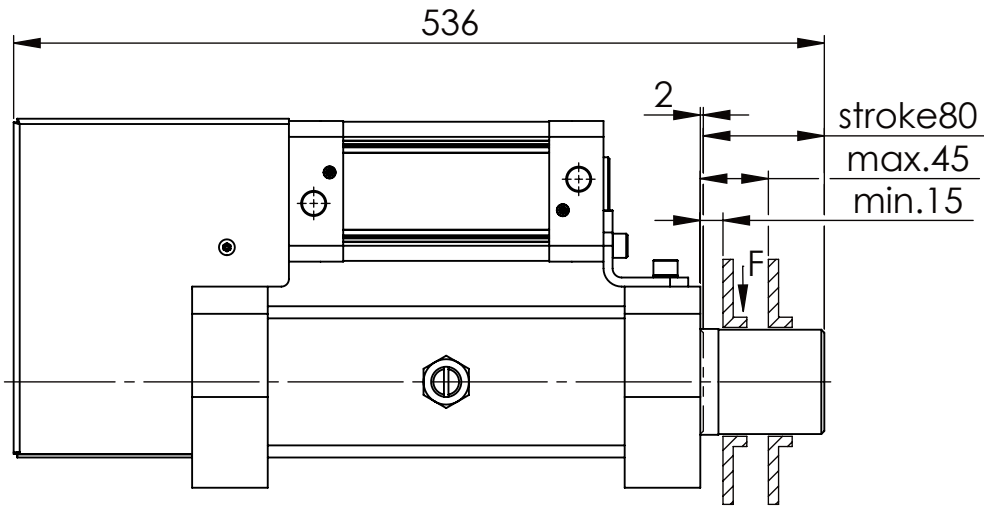
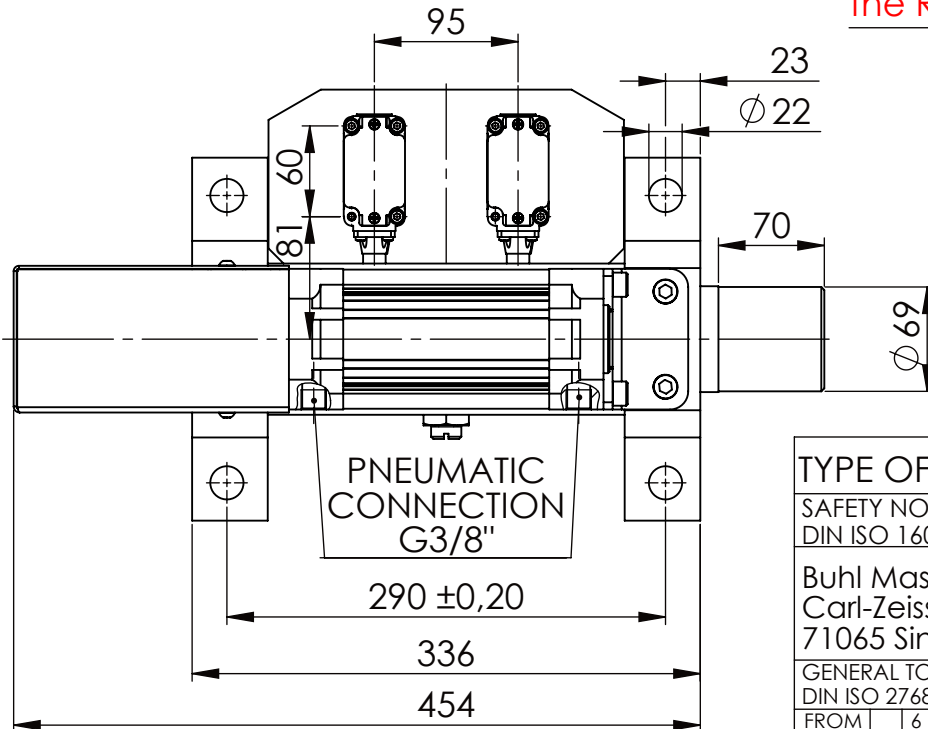
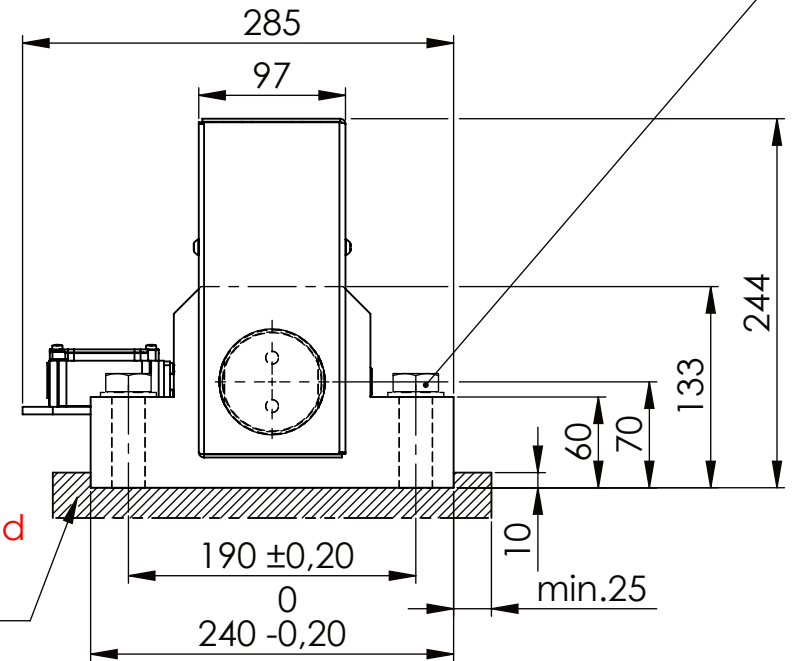


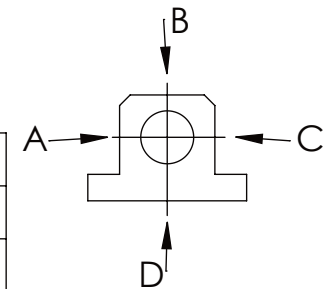
Hexagon Screw DIN 931/DIN EN ISO 4014-M20x90- 8.8, Ma=320Nm,
Washer DIN 125/DIN EN ISO 7089 -A21, retain with Loctite or similar



please observe the fivefold
security during welding of
the Retaining plate



A	B	C	D
F all.	60.000 N	17.000 N	
under static load			



TYPE OF DOKUMENT: DATA SHEET

WEIGHT [KG]: 40.75 PROJECTION

SAFETY NOTE
DIN ISO 16016:2007-12

Buhl Maschinenbau e.K.
Carl-Zeiss-Str. 2
71065 Sindelfingen

	Date	Name
DRAW.	10.03.15	G.Velleuer
APP.	11.03.15	W.Buhl

DESIGNATION

SAFETY LOCKING

ADDITIONAL DESIGNATION

SA 70P

DRAWING-NO.:

01-SA 70 P 02-03

SHEET-FORMAT

DINA4

SCALE

1:5

REV.

0

GENERAL TOLERANCE
DIN ISO 2768 m-K

FROM	6	30	120	400	1000	2000
TO	6	30	120	400	1000	2000
TOL.±	0.1	0.2	0.3	0.5	0.8	1.2

Buhl Maschinenbau e.K.
Sindelfingen

BUHL