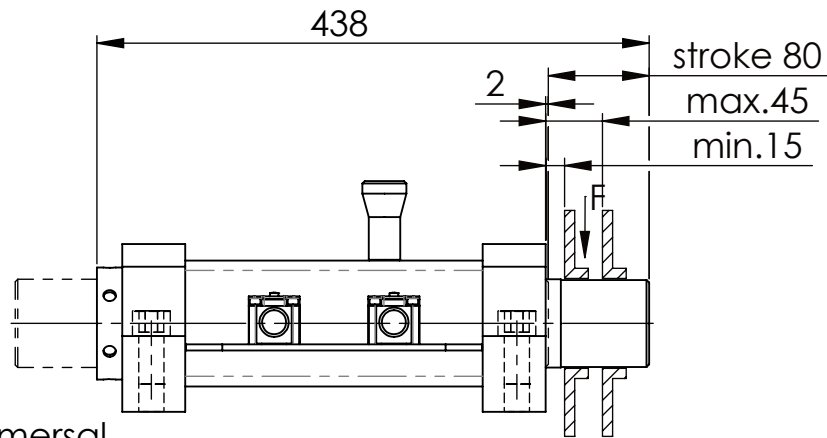
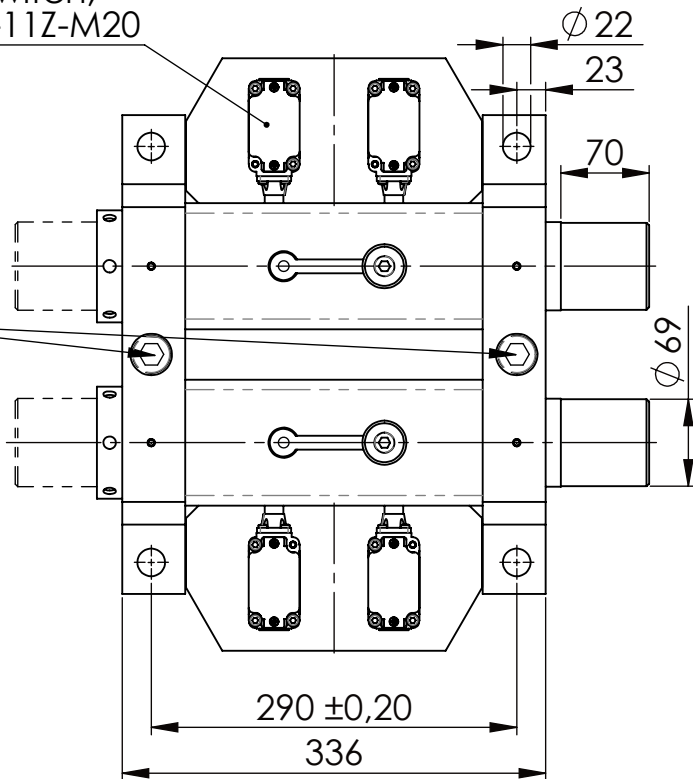


Hexagon Screw DIN 931/DIN EN ISO 4014-M20x90- 8.8, Ma=320Nm,
Washer DIN 125/DIN EN ISO 7089 -A21, retain with Loctite or similar

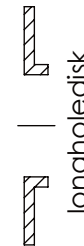
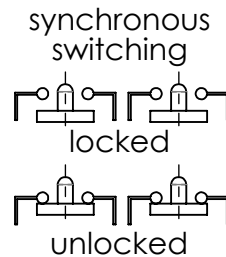
Socket Head Cap Screw DIN 912/DIN EN ISO 4762 - M20x90-8.8,
Ma=320Nm, retain with Loctite or similar



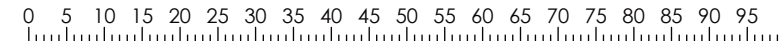
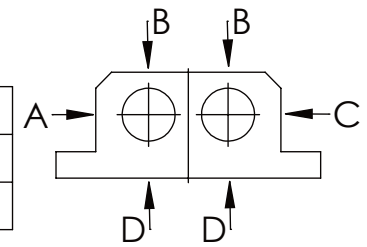
Fa.Schmersal,
Saftey Switch,
ZR 335-11Z-M20



please observe the fivefold
security during welding of
the Retaining plate



A B C	D
F all. 60.000 N	17.000 N
under static load	



TYPE OF DOKUMENT: DATA SHEET

SAFETY NOTE
DIN ISO 16016:2007-12
Buhl Maschinenbau e.K.
Carl-Zeiss-Str. 2
71065 Sindelfingen

GENERAL TOLERANCE DIN ISO 2768 m-K							
FROM	6	30	120	400	1000	2000	
TO	6	30	120	400	1000	2000	4000
TOL.±	0.1	0.2	0.3	0.5	0.8	1.2	2.0

Date	Name
DRAW. 21.10.19	G.Velleuer
APP. 21.10.19	W.Buhl



WEIGHT [KG]: 60.17

DESIGNATION	SHEET-FORMAT
SAFETY LOCKING	DINA4
ADDITIONAL DESIGNATION	SCALE
SA 70HT-2S	1:6
DRAWING-NO.:	REV.
01-SA 70 HT-2S 01-03	0