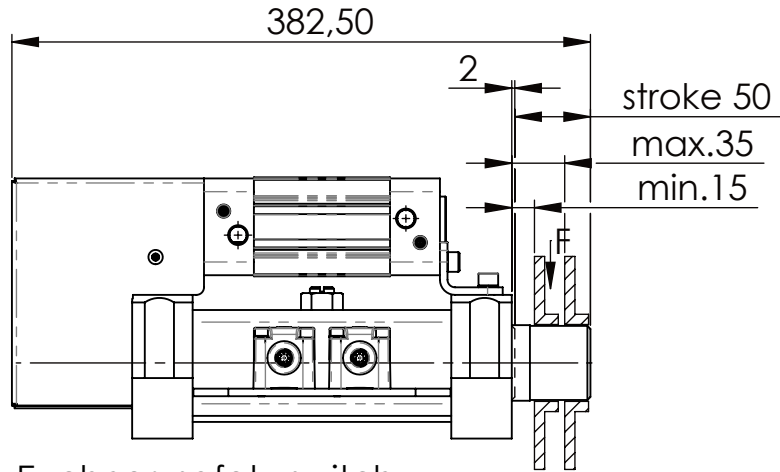
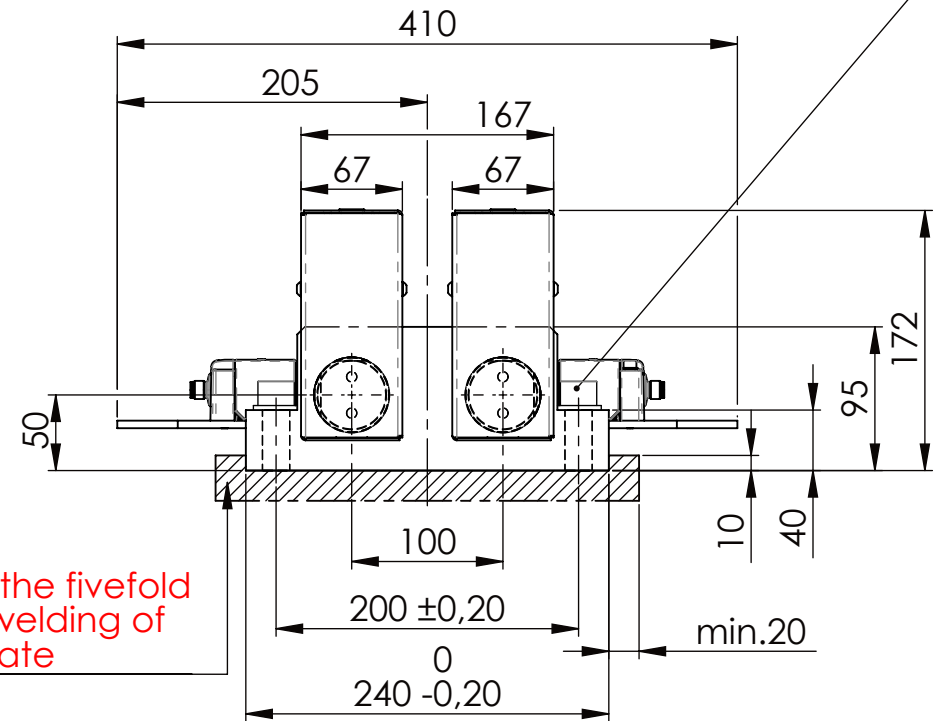
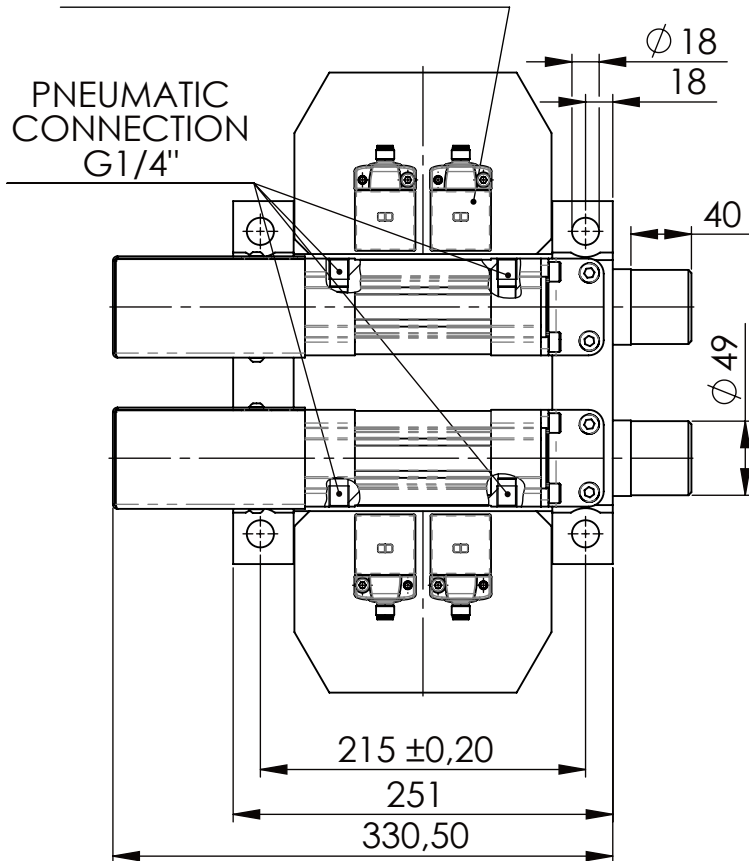


Socket Head Cap Screw DIN 912/DIN EN ISO 4762 - M16x60-8.8, Ma=90Nm,
Washer DIN 125/DIN EN ISO 7089 -A17, retain with Loctite or similar

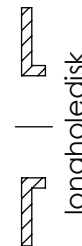
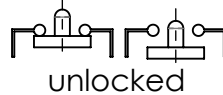


Fa. Euchner, safety switch,
CES-AP-C01-CH-SB

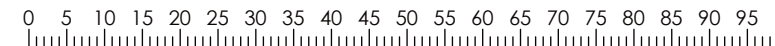
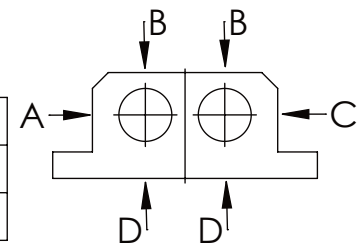


please observe the fivefold
security during welding of
the Retaining plate

asynchronous
switching



A B C	D
F all.	22.000 N
	6.185 N
under static load	



TYPE OF DOKUMENT: DATA SHEET

WEIGHT [KG]: 30.21

PROJEKTION

SAFETY NOTE
DIN ISO 16016:2007-12

Buhl Maschinenbau e.K.
Carl-Zeiss-Str. 2
71065 Sindelfingen

DATE

NAME

DRAW. 21.03.18 G.Velleuer

APP. 21.03.18 W.Buhl

DESIGNATION

SAFETY LOCKING

ADDITIONAL DESIGNATION

SA 50PT-2S

DRAWING-NO.:

01SA50PT-2S01-05CES

SHEET-FORMAT

DINA4

SCALE

1:5

REV.

0

GENERAL TOLERANCE DIN ISO 2768 m-K							
FROM	6	30	120	400	1000	2000	
TO	6	30	120	400	1000	2000	4000
TOL.±	0.1	0.2	0.3	0.5	0.8	1.2	2.0

Buhl Maschinenbau e.K.
Sindelfingen

BUHL