

Technical drawing of the U-Sch 323 machine. The main view is a side elevation showing a horizontal beam with a central camera and two vertical supports. A dimension line at the top indicates a total width of 323. A cross-section view on the right shows the internal components, including a vertical rod with a downward force F and a horizontal rod. Dimensions for the cross-section are given: a total width of 2, a maximum hub of 50 (Hub 50 max.35), and a minimum hub of 15 (min.15). The label 'U-Sch 323' is in the top right corner.

Technical drawing of a mechanical component, likely a valve or actuator, showing dimensions and a note.

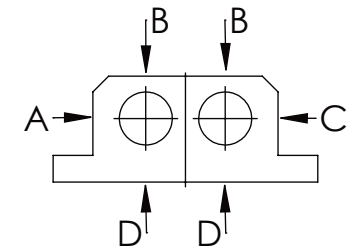
Dimensions (mm):

- Overall width: 410
- Distance between mounting points: 205
- Overall height: 153
- Height of mounting flange: 95
- Height of base: 40
- Height of mounting flange (inner): 10
- Distance between mounting points (inner): 100
- Distance between mounting points (outer): $200 \pm 0,20$
- Distance between mounting points (outer, with tolerance): $240 - 0,20$
- Minimum distance from mounting point to edge: min. 20

Note (in red text):

Dießen der
f 5-fache
ten

	A B C	D
F _{zul.}	22.000 N	6.185 N
bei stat. Belastung		



Technical drawing of a mechanical component, likely a valve or actuator, showing a top view with dimensions.

Key dimensions and features:

- Overall width: 251
- Distance between centers of horizontal ports: $215 \pm 0,20$
- Height of the central body: 40
- Diameter of the horizontal ports: $\phi 49$
- Height of the central vertical port: 18
- Diameter of the central vertical port: $\phi 18$
- Mounting flanges with four holes each.

BUHL

Revision
0