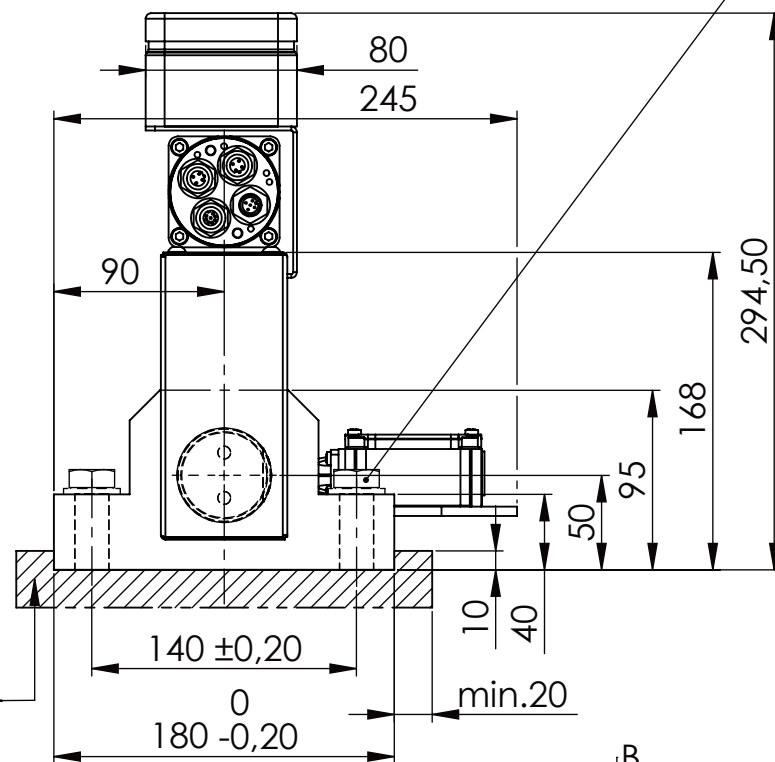
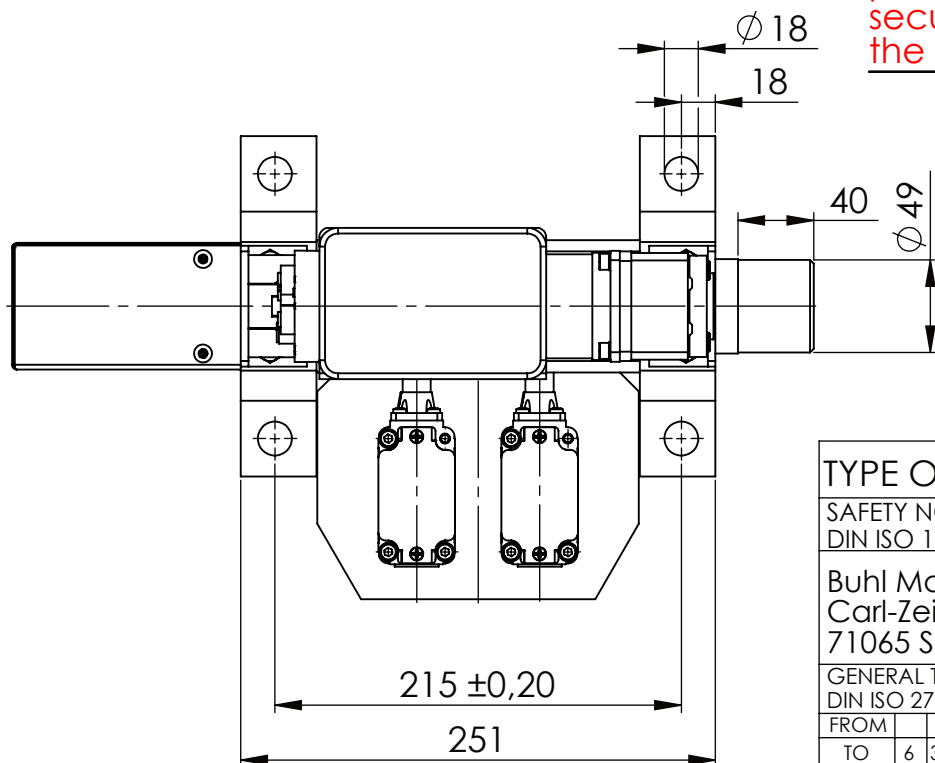


Hexagon Screw DIN 931/DIN EN ISO 4014-M16x60- 8.8, Ma=90Nm,
Washer DIN 125/DIN EN ISO 7089 -A17, retain with Loctite or similar

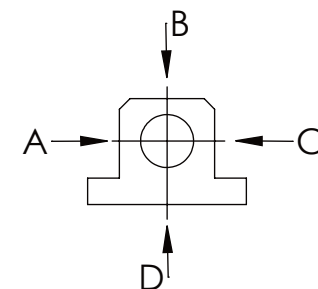


please observe the fivefold
security during welding of
the Retaining plate



longholedisk

| A | B | C | D |
|-------------------|----------|---------|---|
| F all. | 22.000 N | 6.185 N | |
| under static load | | | |



0 5 10 15 20 25 30 35 40 45 50 55 60 65 70 75 80 85 90 95

TYPE OF DOKUMENT: DATA SHEET

WEIGHT [KG]: 16.52

PROJEKTION

SAFETY NOTE
DIN ISO 16016:2007-12

Date

Name

DESIGNATION

SHEET-
FORMAT
DINA4

Buhl Maschinenbau e.K.
Carl-Zeiss-Str. 2
71065 Sindelfingen

DRAW.

24.11.15

G.Velleuer

SAFETY LOCKING

APP.

26.11.15

W.Buhl

ADDITIONAL DESIGNATION

SCALE

GENERAL TOLERANCE
DIN ISO 2768 m-K

BUHL

SA 50EMO

1:4

| FROM | 6 | 30 | 120 | 400 | 1000 | 2000 |
|-------|-----|-----|-----|-----|------|------|
| TO | 6 | 30 | 120 | 400 | 1000 | 2000 |
| TOL.± | 0.1 | 0.2 | 0.3 | 0.5 | 0.8 | 1.2 |

BUHL

DRAWING-NO.:

REV.

01-SA 50 EMO 01-03

0