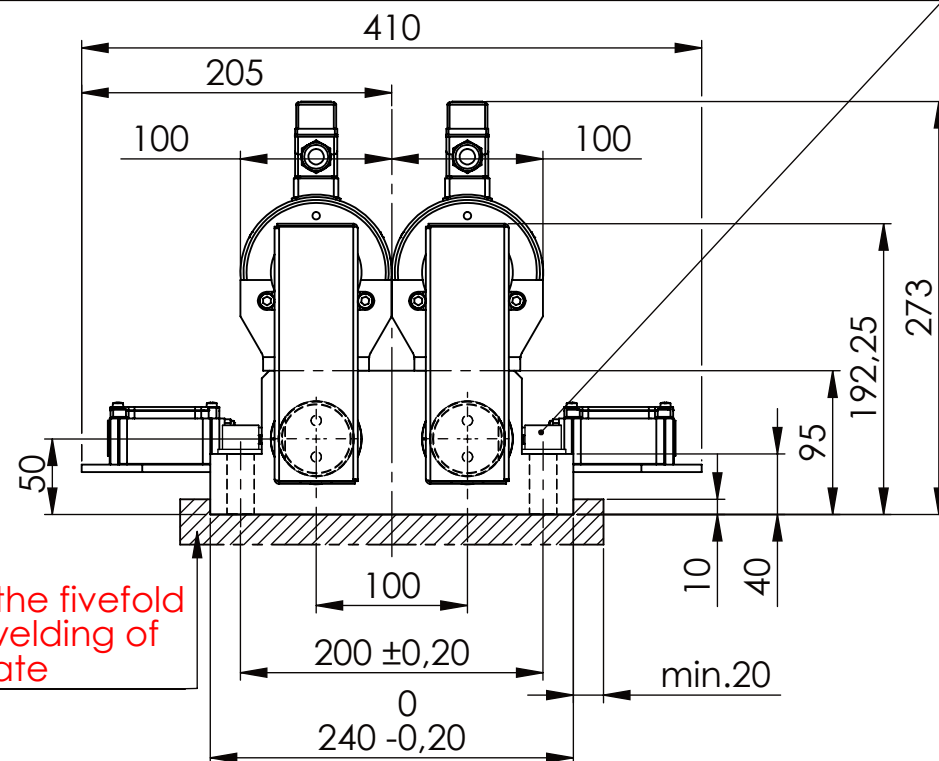
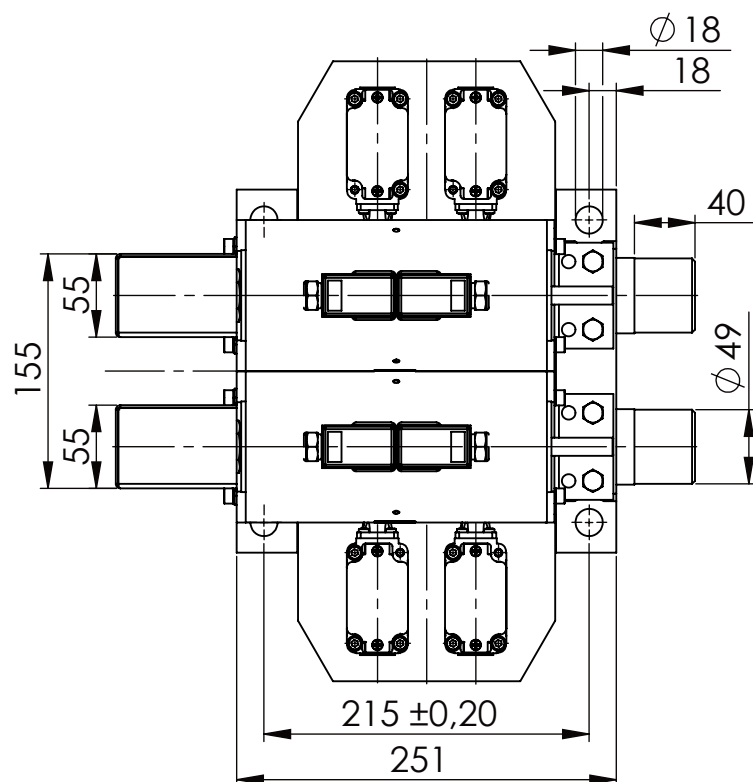
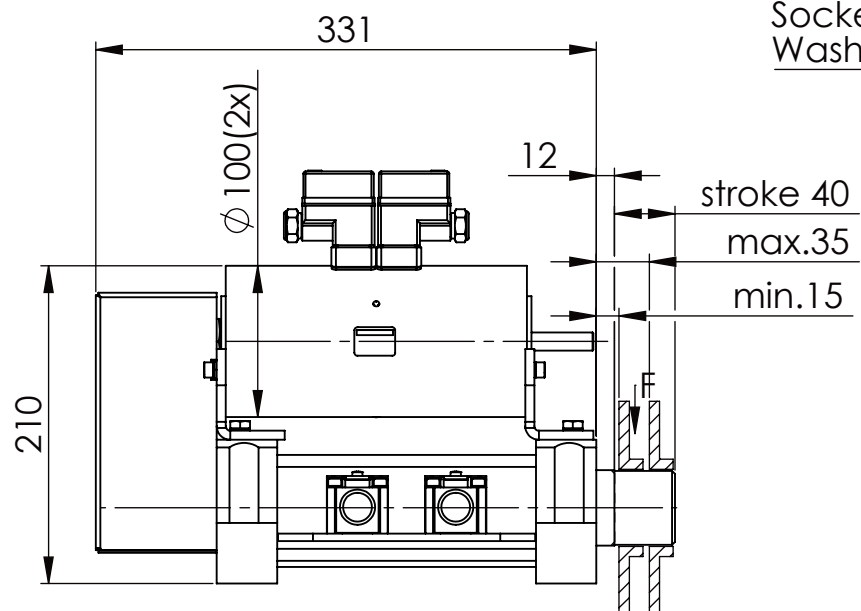


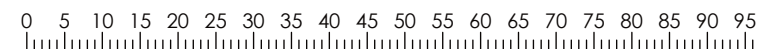
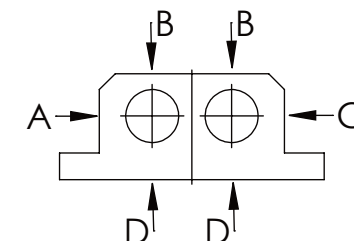
Socket Head Cap Screw DIN 912/DIN EN ISO 4762 - M16x60 - 8.8, Ma=90Nm,
Washer DIN 125/DIN EN ISO 7089 -A17, retain with Loctite or similar

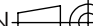



please observe the fivefold security during welding of the Retaining plate



	A B C	D
F _{all} .	22.000 N	6.185 N
under static load		



TYPE OF DOKUMENT: DATA SHEET												WEIGHT [KG]: 45.43				PROJEKTION							
SAFETY NOTE DIN ISO 16016:2007-12								Date		Name				DESIGNATION				SHEET-FORMAT					
Buhl Maschinenbau e.K. Carl-Zeiss-Str. 2 71065 Sindelfingen						DRAW.		24.11.15		G.Velleuer				SAFETY LOCKING				DINA4					
						APP.		25.11.15		W.Buhl				ADDITIONAL DESIGNATION				SCALE					
GENERAL TOLERANCE DIN ISO 2768 m-K																SA 50EMT-2S				1:5			
FROM		6	30	120	400											1000	2000	DRAWING-NO.:				REV.	
TO		6	30	120	400											1000	2000	01-SA 50 EM T-2S 01-05				0	
TOL.±		0.1	0.2	0.3	0.5											0.8	1.2						