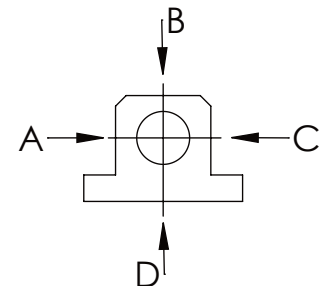



Technical drawing of a washing machine showing dimensions and components. The overall width is 331 and the overall height is 210. The top section has a diameter of  $\phi 100$ . The bottom section has a width of 12. The top section is labeled "stroke 40", "max.35", and "min.15". The bottom section is labeled "F".

Technical drawing of a mechanical assembly (Fig. 1) showing a side view with dimensions. The drawing includes a base plate with a central slot and a vertical component mounted on it. Dimensions are given in millimeters. Key dimensions include: total width 245, width of the central slot 155, width of the base plate  $140 \pm 0,20$ , and total height 273. A note "Unfolding of" is present on the left side.

longholedisk

	A B C	D
F <sub>all.</sub>	22.000 N	6.185 N
under static load		



WEIGHT [KG]: 24.19 PROJEKTION 

	Date	Name
DRAW.	17.02.16	G.Velleuer
APP.	19.02.16	W.Buhl

er	SAFETY LOCKING	DINA4
----	----------------	-------

SA 50EM	1:4
DRAWING NO.:	REV.

DRAWING-NO.:	REV.
01-SA 50 FM 01-05	0

GENERAL TOLERANCE DIN ISO 2768 m-K							
FROM		6	30	120	400	1000	2000
TO	6	30	120	400	1000	2000	4000
TOI +	0.1	0.2	0.3	0.5	0.8	1.2	2.0

Buhl Maschinenbau e.K.  
Sindelfingen

BUHL