

Technical drawing of a mechanical assembly, likely a pump or motor housing, showing dimensions and components.

Dimensions:

- Overall width: 331
- Overall height: 210
- Internal vertical distance:  $\phi 100$
- Stroke: 40
- Maximum distance: max.35
- Minimum distance: min.15

Labels:

- Was (likely a reference to a part or assembly)
- F (likely a force or flow indicator)

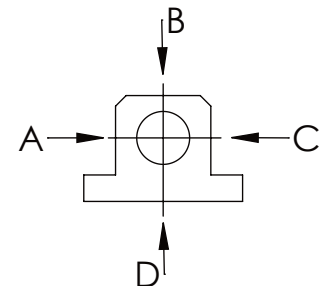
Technical drawing of a mechanical assembly, likely a valve actuator, showing dimensions in millimeters. The drawing includes a side view and a top view. Key dimensions are:


- Overall width: 245
- Distance from left edge to centerline: 90
- Distance from centerline to right edge: 155
- Overall height: 273
- Distance from top of assembly to centerline: 192,25
- Distance from centerline to bottom of assembly: 95
- Distance from left edge to centerline (bottom view): 140  $\pm 0,20$
- Distance from centerline to right edge (bottom view): 180  $-0,20$
- Distance from bottom of assembly to centerline (bottom view): 0
- Distance from centerline to right edge (bottom view): min.20
- Distance from bottom of assembly to centerline (bottom view): 10
- Distance from bottom of assembly to centerline (bottom view): 40

The drawing also includes a note: "Unfolding of" (partially visible) and a reference to "B" (partially visible).

longholedisk

|                   |          |         |
|-------------------|----------|---------|
|                   | A B C    | D       |
| F <sub>all.</sub> | 22.000 N | 6.185 N |
| under static load |          |         |



WEIGHT [KG]: 24.19 PROJEKTION 

|       | Date     | Name       |
|-------|----------|------------|
| DRAW. | 17.02.16 | G.Velleuer |
| APP.  | 19.02.16 | W.Buhl     |

|    |                |       |
|----|----------------|-------|
| er | SAFETY LOCKING | DINA4 |
|----|----------------|-------|

|              |      |
|--------------|------|
| SA 50EM      | 1.4  |
| DRAWING NO.: | REV. |

|                                   |            |
|-----------------------------------|------------|
| DRAWING-NO..<br>01-SA 50 EM 01-03 | REV..<br>0 |
|-----------------------------------|------------|

| GENERAL TOLERANCE<br>DIN ISO 2768 m-K |     |     |     |     |      |      |      |
|---------------------------------------|-----|-----|-----|-----|------|------|------|
| FROM                                  |     | 6   | 30  | 120 | 400  | 1000 | 2000 |
| TO                                    | 6   | 30  | 120 | 400 | 1000 | 2000 | 4000 |
| TOL.±                                 | 0.1 | 0.2 | 0.3 | 0.5 | 0.8  | 1.2  | 2.0  |

Buhl Maschinenbau e.K.  
Sindelfingen

BUHL