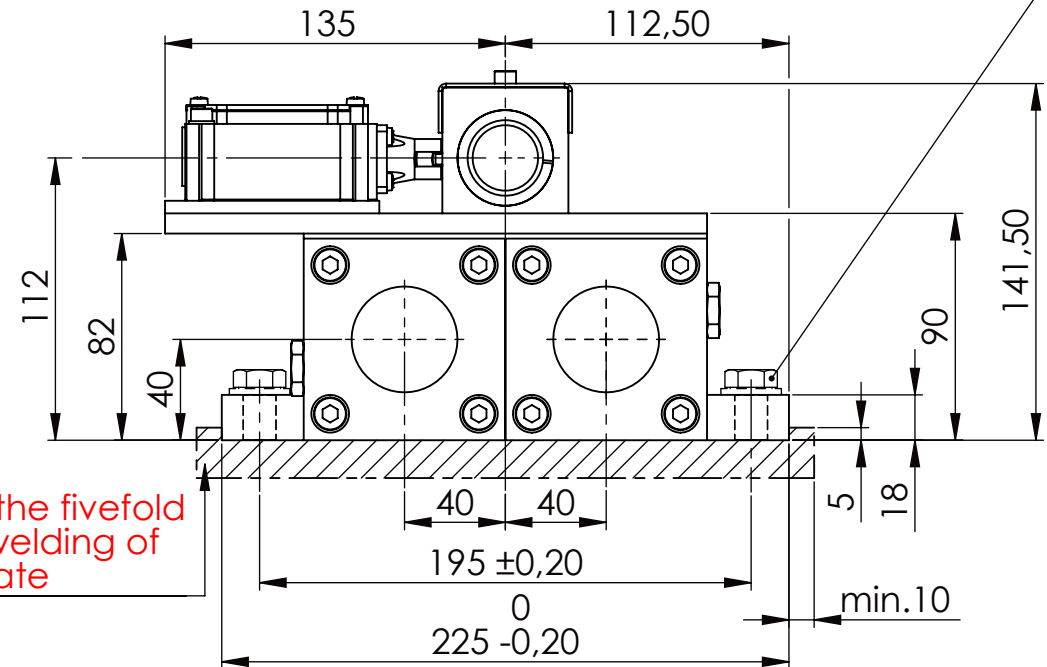
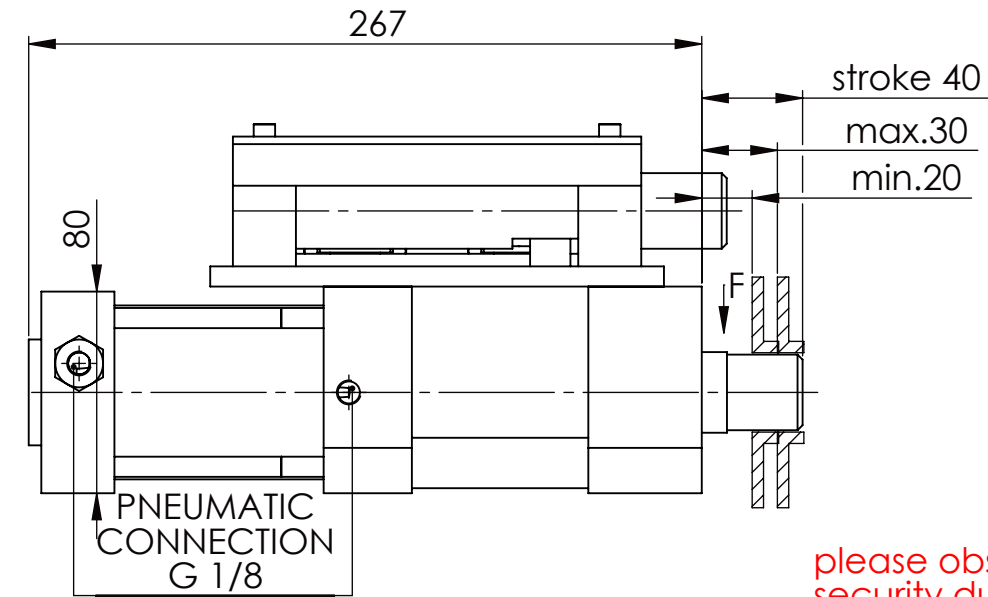
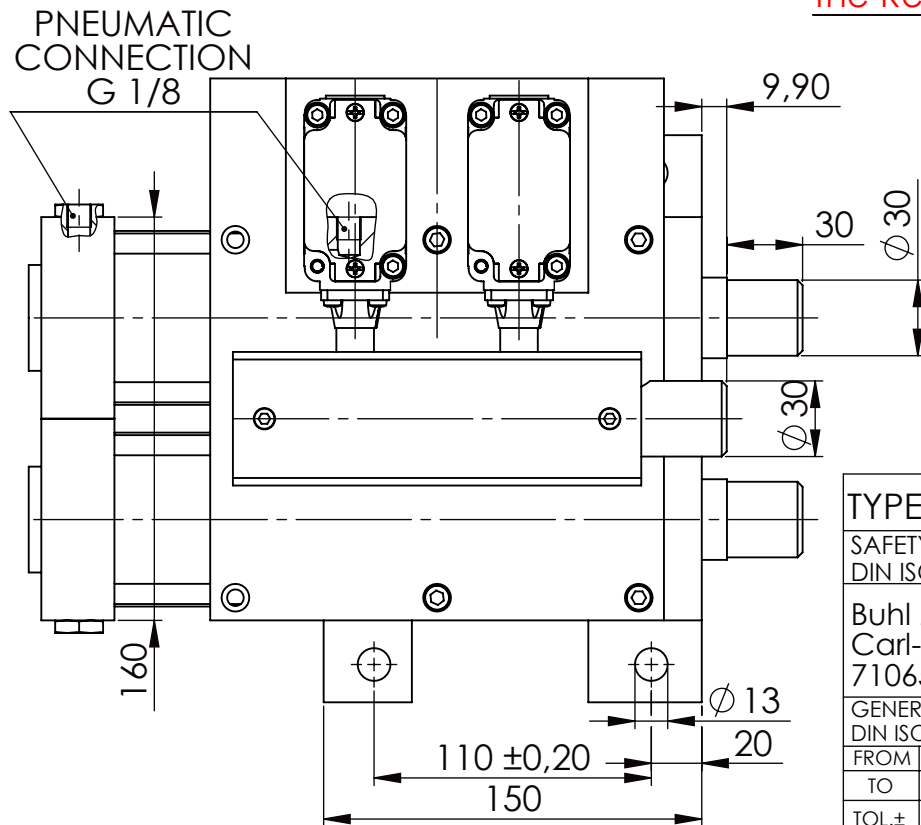


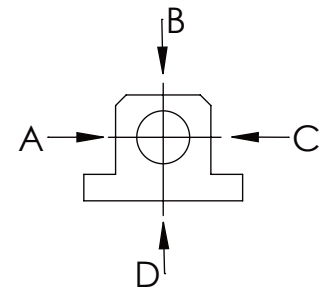
Hexagon Screw DIN 931/DIN EN ISO 4014-M12x35- 10.9, Ma=37Nm,  
Washer DIN 125/DIN EN ISO 7089 -A13, retain with Loctite or similar



please observe the fivefold security during welding of the Retaining plate



A	B	C	D
F all.	10.000 N		
under static load			



#### TYPE OF DOKUMENT: DATA SHEET

SAFETY NOTE  
DIN ISO 16016:2007-12

Buhl Maschinenbau e.K.  
Carl-Zeiss-Str. 2  
71065 Sindelfingen

GENERAL TOLERANCE  
DIN ISO 2768 m-K

FROM	6	30	120	400	1000	2000
TO	6	30	120	400	1000	2000
TOL.±	0.1	0.2	0.3	0.5	0.8	1.2

Buhl Maschinenbau e.K.  
Sindelfingen

**BUHL**

Date	Name
DRAW. 02.12.15	G.Velleuer
APP. 04.12.15	W.Buhl

WEIGHT [KG]: 23.29

PROJECTION

DESIGNATION

SAFETY LOCKING

ADDITIONAL DESIGNATION

SA 30PT

DRAWING-NO.:

01-SA 30 PT 01-03

SHEET-FORMAT  
DINA4

SCALE  
1:3

REV.  
0