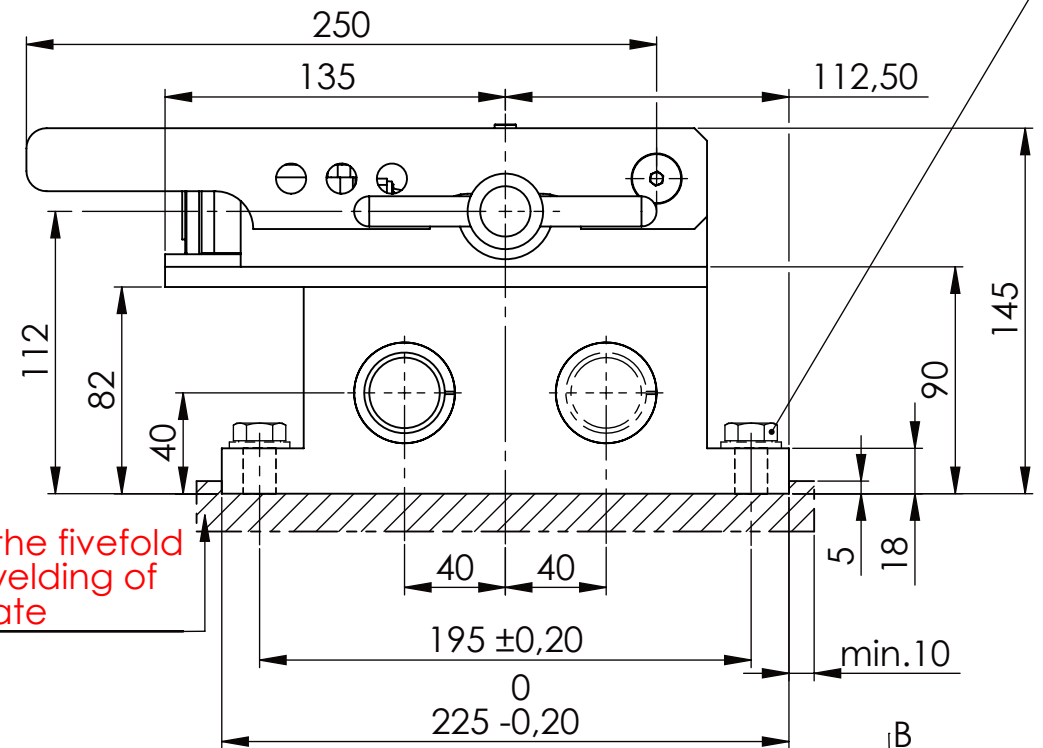
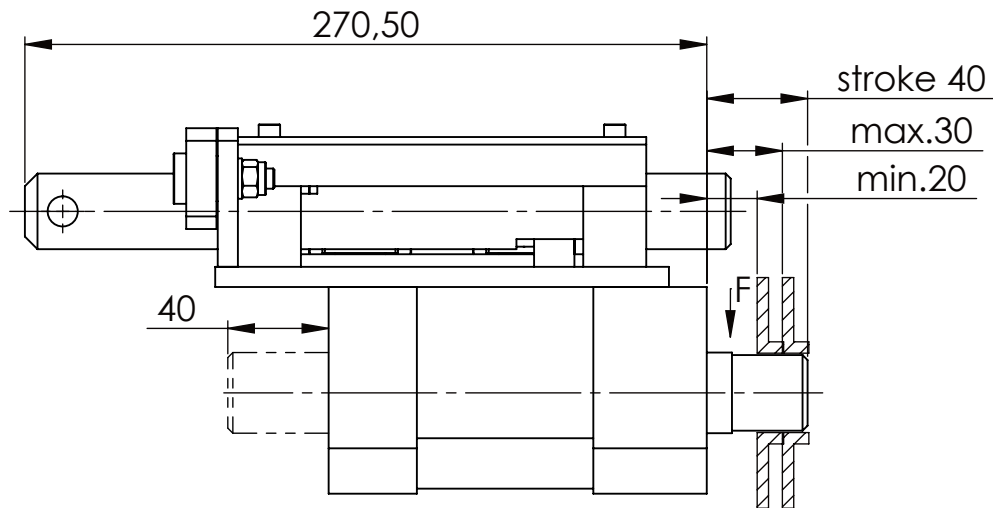
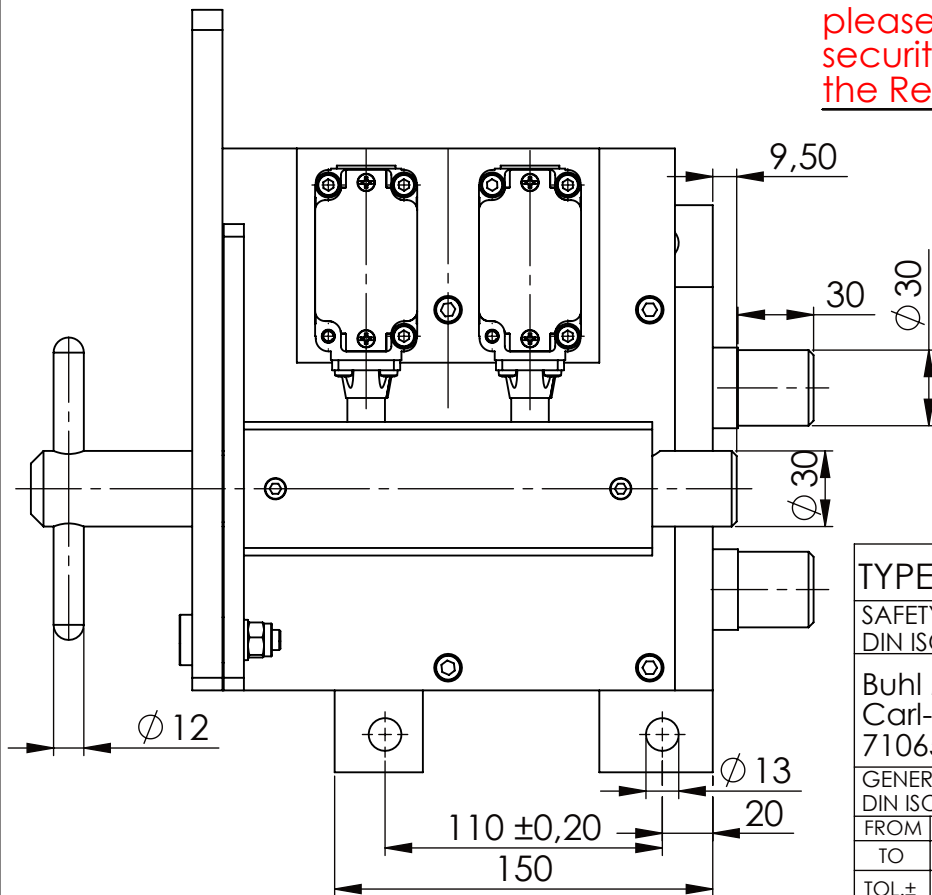


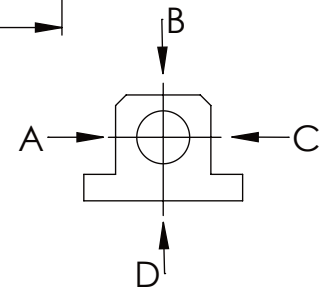
Hexagon Screw DIN 931/DIN EN ISO 4014-M12x35- 10.9, Ma=37Nm,  
Washer DIN 125/DIN EN ISO 7089 -A13, retain with Loctite or similar



please observe the fivefold  
security during welding of  
the Retaining plate



A	B	C	D
F all.	10.000 N		
under static load			



TYPE OF DOKUMENT: DATA SHEET

WEIGHT [KG]: 22.63 PROJECTION

SAFETY NOTE  
DIN ISO 16016:2007-12

Date Name

DESIGNATION

SHEET-  
FORMAT  
DINA4

Buhl Maschinenbau e.K.  
Carl-Zeiss-Str. 2  
71065 Sindelfingen

DRAW. 02.12.15 G.Velleuer  
APP. 04.12.15 W.Buhl

SAFETY LOCKING

ADDITIONAL DESIGNATION

SCALE

GENERAL TOLERANCE  
DIN ISO 2768 m-K

Buhl Maschinenbau e.K.  
Sindelfingen

**BUHL**

SA 30HT

DRAWING-NO.:

REV.

01-SA 30 HT 01-03

0

FROM	6	30	120	400	1000	2000
TO	6	30	120	400	1000	2000
TOL.±	0.1	0.2	0.3	0.5	0.8	1.2