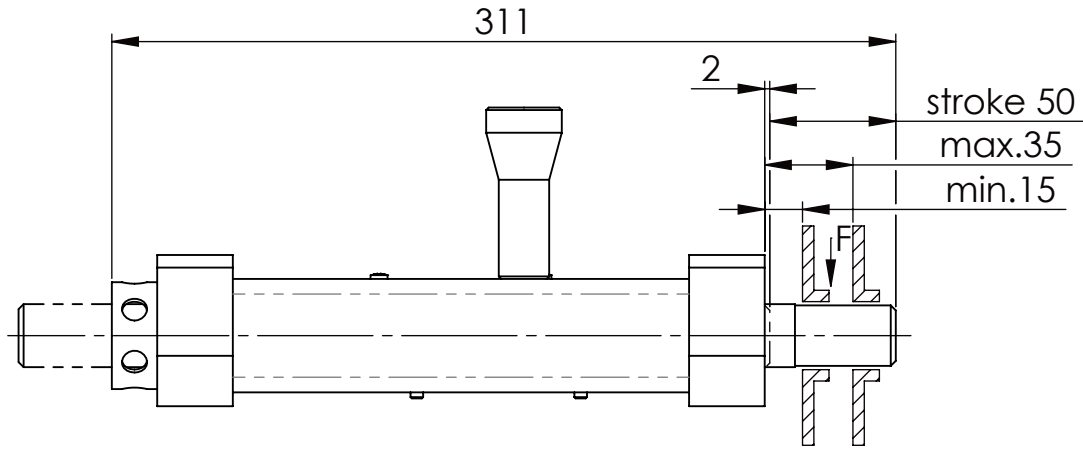
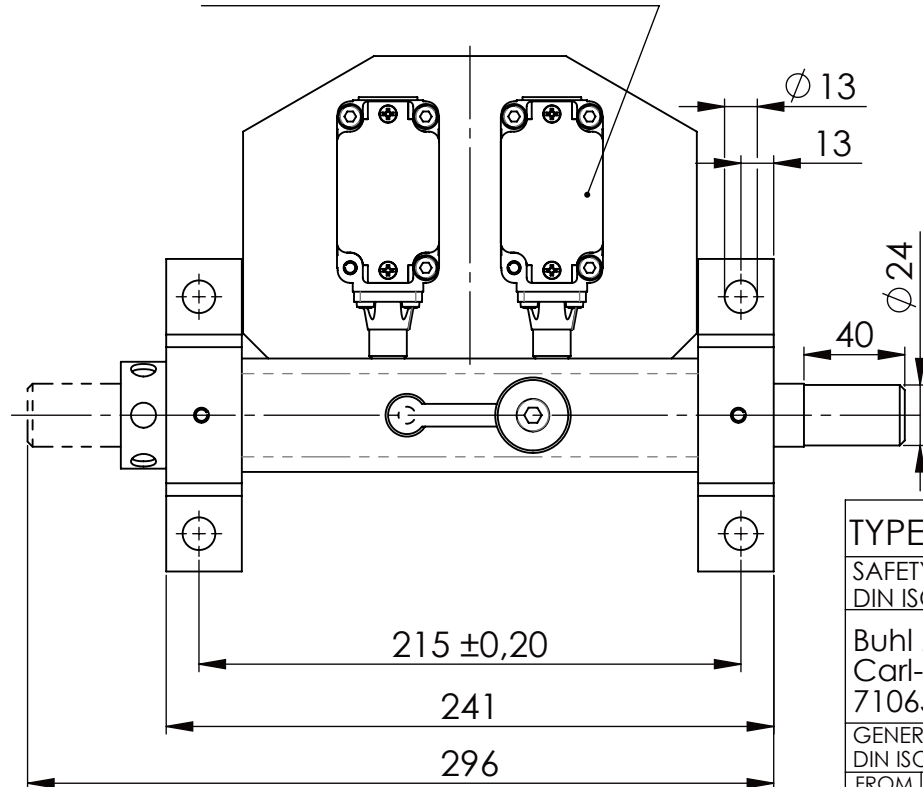
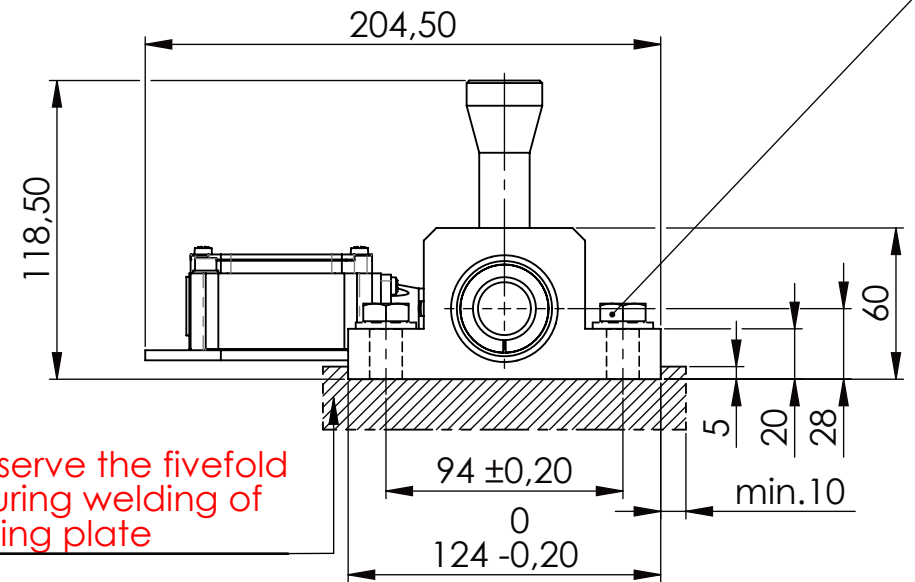


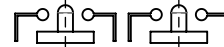
Hexagon Screw DIN 931/DIN EN ISO 4014-M12x40- 8.8, Ma=40Nm,  
Washer DIN 125/DIN EN ISO 7089 -A13, retain with Loctite or similar



Fa.Schmersal, Safty Switch,  
ZR 335-11Z-M20



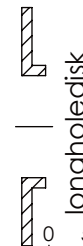
synchronous  
switching



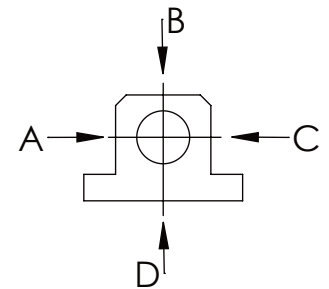
locked



unlocked



A B C D
F all. 3.000 N
under static load



TYPE OF DOKUMENT: DATA SHEET

WEIGHT [KG]: 5.08

PROJECTION

SAFETY NOTE

DIN ISO 16016:2007-12

Buhl Maschinenbau e.K.  
Carl-Zeiss-Str. 2  
71065 Sindelfingen

DRAW.

Date 21.03.18

Name G.Velleuer

APP.

Date 21.03.18

Name W.Buhl

GENERAL TOLERANCE  
DIN ISO 2768 m-K

FROM	6	30	120	400	1000	2000
TO	6	30	120	400	1000	2000
TOL.±	0.1	0.2	0.3	0.5	0.8	1.2

Buhl Maschinenbau e.K.  
Sindelfingen

**BUHL**

DESIGNATION

SAFETY LOCKING

ADDITIONAL DESIGNATION

SA 25H

DRAWING-NO.:

01-SA 25 H 02-03

SHEET-  
FORMAT  
DINA4

SCALE  
1:3

REV.  
0